

MIDDLETON MESSENGER

The Newsletter for Middleton on the Wolds

Issue No 2

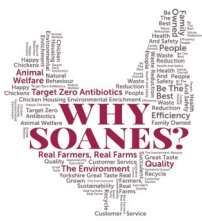
March 2019



**THIS ISSUE IS SPONSORED BY
SOANES POULTRY**

THIS MONTH'S SPONSORS

Have you noticed Soanes Poultry's new look?



You may have noticed that Soanes Poultry has a shiny new sign on the front of its building at Church Hill Farm.

The new sign is the latest in a series of moves to refresh the multi award-winning business that was started by farmer Tom Soanes in 1947 and is still owned by the Soanes family.

The new look includes a contemporary illustration of St. Andrew's Church and extends to Soanes Poultry's fleet of vehicles, its drivers uniforms, its product packaging, a 'word bird' and a new recipe book that will be delivered to all of the homes in the village with this edition of the Messenger.

Soanes prides itself on its Yorkshire provenance and supplies its great tasting, award winning chicken to independent butchers, convenience stores and farm shops throughout Yorkshire, including Tindall's and D.Cammish in Driffield; Vanessa's, Peck's and J.H. Family Butchers in Beverley; F.Leake in Market Weighton and Laveracks in Holme on Spalding Moor.

Keep an eye open for the new look on its brand new website that will launch shortly at www.soanespoultry.co.uk and follow Soanes Poultry on social media for all the latest news, offers and competitions www.facebook.com and https://www.instagram.com/soanes_poultry



Some of the Soanes Poultry team with the new look vehicle livery

EDITORIAL

A few things to talk about this month some good, some not so good.

The Neighbourhood Plan meetings held by Nick Jones brought out some good suggestions and raised valid concerns about the future of the village including the need to make some provision for the 11 to 18 age-group who seem to fall between the stools of the Orchard Drive play area and the Robin Hood! The question is what can we do for them? Which really should be directed at the young people themselves so, 'What can we do for you'?

Moving on from that, where do you walk your dog? Is it on a public right of way or is it on someone else's property? If it is the latter you should make sure you have permission to walk there, after all, you wouldn't want people to walk their dogs through your garden, would you? This subject came up because a local landowner was verbally abused after pointing out to a dog walker that they were on private land, not a public footpath. No doubt their bravery was increased because the landowner was a lady of a certain age but who am I to judge? Anyway, the point is that you should be aware of where you are walking and, if in doubt, ask.

Finally, feedback on the new format has been almost exclusively positive but we're still listening to you so last month's offer still stands:

If you have any ideas, comments or complaints you want to share then send an email to middletonflyer@yahoo.com.

Cheers,

Mike

We hope you enjoy using the recipes in the recipe book from Soanes Poultry. Do you have a favourite recipe? Do send it in for others to share!



NEXT COPY DATE 16th March

Please send your article or poster to middletonflyer@yahoo.co.uk in good time as I will begin compiling the next messenger the week leading up to the copy date. (You can pop it through my door if you don't have email access - 4 The Paddocks.)

Don't forget to contact me if you don't get an acknowledgement as the email may have gone astray.

Lyn 219500

QUIZ PAGE

GENERAL KNOWLEDGE QUIZ [1]



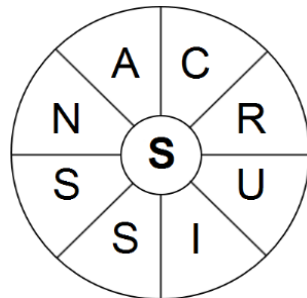
- 1 Who was the lead singer in The Police?
- 2 How many lines are there in a limerick?
- 3 How many white stripes are there on American flag?
- 4 What is Hypnophobia the fear of?
- 5 Who played The Outlaw Josie Wales in the movie of the same name?
- 6 In The Advert what Cleaned like a white tornado?
- 7 What are the names of the four stations on a Monopoly board?
- 8 What is Bugs Bunny's catchphrase?
- 9 In which year did the explosion at the Chernobyl nuclear reactor occur?
- 10 Who was the First British Prime Minister?

Quiz set by Rowland Wooldridge

SUDOKU

	5							9
		3		1	6		7	
4	8	1	7		5		3	6
	3			8				
	7		2				6	5
							4	
	4	7		5		6		1
			9	6				8
6			1	2	4			

WORD WHEEL



This Spring themed word wheel is made from a 9 letter Spring themed word. Try and find that word, then make as many words of any length as you can from these letters. You can only use each letter once, and each word must include the letter S

March Birthday Anagrams

Bandleader gremlin nell

Actor ie mechanical

Composer blondy rewed warble

Actress/singer

Royalty

leila milzinn

carped derwin

(which year were they born?)

All answers on page 19

CRICKET CLUB

Middleton & North Dalton Cricket Club 2019

The club are hoping to build upon a successful 2018 campaign and as always are looking to recruit players. We have two Saturday teams, two teams in the top division of the Bridlington Thursday night evening league, as well as a team in the Foss league on a Wednesday. The Saturday 1st XI starts its campaign at Sewerby on 27th April while the 2nd XI start their campaign a week later at home to Hull Strikers.

The club is holding its pre-season nets at the old Pocklington railway station from 11.45-12.45 on the following Sundays in March, 4th 11th 18th 25th.

As a club we are always looking to recruit players and volunteers old and young of all abilities and will welcome any new faces.

Anyone wanting any information or wanting to join our club should contact the following people

Dave Brent 07788985745

Dave Newlove 07901833784

Ricky Woodmansey 07975519807

Or alternatively search for our facebook page (Middleton and North Dalton cc) or twitter feed (@MNDCC2).



RECENT BURGLARY

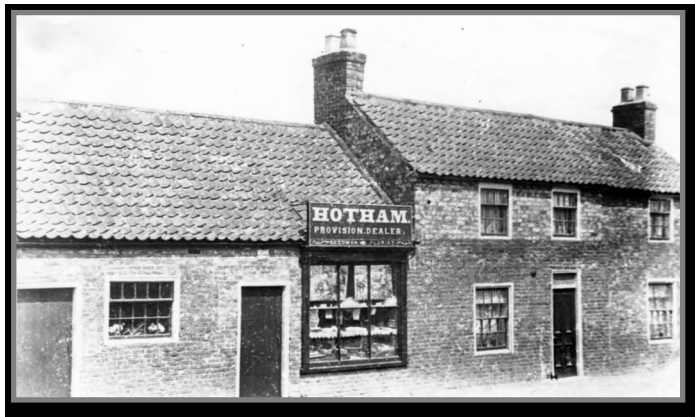
Please be aware that there has recently been a break in at a house in the north side of the village. A bedroom was ransacked and money taken. For information on how to make your home more secure you could look at www.securedbydesign.com as recommended by Humberside Police.

LOCAL HISTORY

THE MERCHANTS OF MIDDLETON

In 1904 a local newspaper reflected on the changes in the village in recent years "Forty years ago Middleton had no means of communication with the outside world except by a carrier's cart which went once a week to Driffield ten miles distant. Now there is a train service between Driffield and Market Weighton and a telegraph office in the village, two posts daily and an evening newspaper nobody can deny that progress has been made."

The railway which opened in 1890 not only linked the village with Driffield but with Bridlington and the West Riding from which there were connections to the capital itself. Starting in the 1870's agriculture was going through a period of depression because of food exports from abroad, a situation which was only given temporary respite during the two World Wars but which was to change dramatically after 1945. Farming however remained labour intensive and the entry in Bulmer's Directory for 1892 reveals a self sufficient village well supplied with the appropriate businesses needed to sustain the workforce and their families, while carriers now served not only Driffield but Beverley, Market Weighton and Hull.



There were two blacksmiths, two bootmakers, eight grocers, four joiners, three tailors and two saddlers. Familiar surnames appear in the list such as William Eastwood, bricklayer, Charles Soanes, poultry dealer and Simpson Dove Victualler at the Rose and Crown. Grocery shops would of course have been small and their stocks limited more to the essentials than luxury items.

In this period before the first war motor transport began to make an appearance and this would lead ultimately to a revolution in how people conducted their lives.

Between the wars farm work still required sturdy clothing and Percy Linford recalled that workers bought most of their clothes in the village whilst the women might buy further afield.

Even in the 1950's Mrs H. Atkinson in an essay for the WI was able to say " Many of the country craftsmen are still carrying on the trade of their forefathers. The last census showed a population of 600 and in no other village of that size would one find more different trades and occupations being carried on. The doctor, the postmistress, a lady butcher, a market gardener, a lady horticulturist, two joiners and wheelwrights, two cobblers, a watch and clock repairer, two friers of fish and chips, a saddler, two dance bands, a milk dairy, a paper shop, grocery and provisions shops and the village policeman, all ply their particular trade.

In 1992 Mrs Sims, a lifelong resident and a shopkeeper, lamented the loss of farms and shops in the village. The once self contained farming community had been suburbanised by new housing and shopping habits had changed.

Geoff Wisher

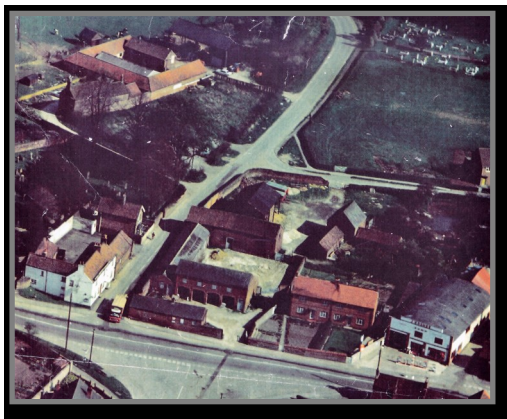
THE WITTY FAMILY

For the occasion of the 500th anniversary of the Kiplingcotes Derby on 21st March, an old Middleton family is returning from Canada to participate in the race. Three generations of the Witty family will be flying from Manitoba and British Columbia to discover their family history at Middleton on the Wolds. Twenty-three year old Vanessa Witty, a descendant of Peter Witty who was at the race in 1519, hopes to ride in the anniversary year. Wittys before her have taken part, and indeed the Kiplingcotes winning post was on the very land farmed by the Wittys in 1519.

The Wittys of Manor House Farm, Middleton, were there from about 1700 until 1935, and from 1500-1700 farmed elsewhere in the village, according to the researches of family historian Graham Steer, whose mother was a Witty. The farmhouse has now gone but the yard next door survives as the carpark of the Robin Hood Inn. Graham Steer would be very interested to hear from anyone who might have old photographs of the village, in particular Manor House Farm, or who is interested in the Witty family tree.

e-mail: brasilofile@hotmail.com

Graham Steer



Graham is a retired teacher living in London. He has been researching the Witty family in our area for the last 40 years.

Middleton Spring Quiz



Middleton Village Hall
Friday 12th April 2019

7.15pm



£7.00 per person Supper Included
Raffle

Proceeds split 50/50 in Aid of St, Andrews Church and
Prostate Cancer UK (Hull and East Riding)

Tickets From
Lynn & Rowland Wooldridge 01377 217457
Kath Bentley 01377 217456

A NOTE FROM YOUR ASSISTANT PRIEST



THE JOY OF CHOOSING HYMNS

One of the many things I love about preparing to lead Sunday worship is choosing the hymns. I set myself, during Christmas and Epiphany, the challenge of singing as many different Christmas Carols as possible. Its really good to keep some of the less usual ones in circulation – “Lully lullay, thou little tiny child”; “Every star shall sing a carol” for example.

I shall do the same during Lent, Holy Week and Easter. I look forward to all those minor keys which tug at our hearts during this season: “My song is love unknown”; Drop, drop slow tears”. Then we have the triumph of Eastertide: “Thine be the glory, ris’n conquering Son”; “Alleluia, Alleluia, hearts to heaven and voices raise”; “Now the green blade riseth from the buried grain” – so suitable in our rural context.

I hope I’ve got you humming in your head or singing out loud some of these hymns by now. Hymns can be such a good way of underlining the theme of the service or for bringing out the message of a sermon. Some hymns dictate what the sermon will be about.

That was the case yesterday at Kirkburn. We started with that rousing Victorian hymn “God is working his purpose out as year succeeds to year.” I asked how many people had sung this first at school, and a lot of us have. Now, I think that if the service leader chooses this hymn, it is essential to preach about it as its muscular Christian triumphalism can distress some singers and lead others astray. So why did I choose it?

Well, our Bible readings reminded us, through the call of Isaiah in the Eighth Century BC and the call of Jesus’ first disciples, that God’s purpose is worked out through people. Jesus is God’s purpose worked out to heal the whole world, and we, like Isaiah, Peter and John, are invited to take our share in working out God’s purpose in the context where we are set.

Woldsburn Benefice is looking forward greatly to joining in God’s purpose as Revd Jane Anderson becomes our Vicar on Wednesday March 20. Let us all join in heartily with the hymn Jane has chosen, for it is together we bring in the Kingdom of God around us now.

Brother, sister, let me serve you,
let me be as Christ to you;
Pray that I may have the grace to
let you be my servant too.

With love and prayers, Kate

(Revd Canon Kate Goulder, Woldsburn Benefice)

ST ANDREW'S CHURCH

Services for March

Sunday 3rd 10.30am	Holy Communion, Rev'd Canon Peter Wadsworth
Sunday 10th 10.30am	Joint Worship, Dorothy Prescott
Friday 15th 10.30am	Coffee Break Praise
Sunday 17th 10.30am	Holy Communion, Rev'd Canon Kate Goulder
Sunday 24th 10.30am	Joint Worship at Wolds Methodist Church
Sunday 31st 10.00am	Benefice Holy Communion, Rev'd Jane Anderson and other clergy
Sunday 31st 6.00pm	Songs of Praise, Reading Rooms

The licensing of Rev'd Jane Anderson will be held at St Andrews, Bainton at 7.30pm on Wednesday 20th March, followed by refreshments in the Village Hall.

ADVANCE NOTICE

Holy Saturday Children's Activity Day held in St. Andrews Church for all families and those who live in our village and beyond, on Saturday 20th April 10.00am to noon. Details to follow later.



WINTER WARMER LUNCH

A very sincere and heartfelt thank you to those PCC ladies and friends who worked tirelessly and effectively serving a variety of delicious homemade soups and puddings with charm and competence. Recognition and thanks must also be offered to all those ladies who washed up and cleared away and importantly to our guests who supported the event.

The money raised amounted to £ 160.00 after hiring the village hall and this has been donated to the Easter Saturday Children's Activities and the Yorkshire Air Ambulance.

METHODIST CHURCH, BAINTON

Services for March

Sunday 3 rd	10.30am	Service at the Wolds Methodist Church, Mr Peter Rogers
Sunday 10 th	10.30am	United Service at St Andrews Church, Middleton
Sunday 17 th	10.30am	Service at the Wolds Methodist Church, Deacon Keith Gough
Sunday 24 th	10.30am	Service at the Wolds Methodist Church, Rev'd Robert Amos. Holy Communion
Sunday 31 st	10.30am	Service at the Wolds Methodist Church, Mrs Val Walker
Sunday 31 st	6.00pm	Songs of Praise in the Reading Rooms

CHARITY COFFEE MORNING

will be held in the Reading Rooms on

Saturday 16th March

10.00am to 11.30am

All are welcome for tea/coffee and teacake

plus a raffle in aid of

The Emmaus Homeless Charity (Hull)



PARISH COUNCIL NEWS

At an Extraordinary General Meeting on January 29th the Parish Council agreed to take over the running of the Reading Rooms from the existing committee. This means that we need to form a new committee so, if you have any ideas on how to make best use of this village amenity, let us know and, maybe, come and help with its running.

At the meetings on January 7th and February 4th we discussed, among other things, this year's Tour de Yorkshire which passes through the village on Thursday May 2nd and how to celebrate it. Again, your ideas will be very welcome.

We have also had reports on the somewhat less pleasant subject of dog mess. It's not as bad as it was but there are still examples of fouling, especially on Greenfield Road. It is your village so please clean up after your dog.

The year end is approaching so it's a good time to reflect on what your Parish Council has achieved over the last 12 months and to look at what we hope to get done in the next year.

As well as the ongoing work of maintaining and supporting the amenities of the village (the green and pond area, allotments, the Rec, the Cemetery, etc.) and supporting local services and events (including the village Produce Show, Driffield School Twilight bus service, litter pickers and Christmas lights) we have also provided new equipment for the Orchard Drive play area, refurbished the telephone kiosk and opened it as an information point and book exchange, and cleared the embankment footpath along the back of Greenfield Road and the Rec.

During the next financial year we will act on the estimates we have received for the provision of new steps to the embankment at the Warter Road/Station Road end, clear the embankment to the east of Station Road and improve the footpath between Greenfield Lane and Orchard Drive. The Parish Council is actively seeking funding to extend the footpath up Beverley Road and has also taken over the running of the Reading Rooms.

Regarding funding, anything to do with health and fitness is in vogue just now and money can be available for relevant projects. If you have any ideas on what we need as a village be it public footpaths gym equipment, bike racks or anything to help us keep fit, let us know.

This is a summary – for full meeting details please see the Parish Council website www.middletononthewolds.co.uk

NEIGHBOURHOOD PLAN



A total of 23 people attended the 2 Neighbourhood Plan meetings in January. There were lively discussions around the issues that currently face our village and those we may face in the future. It was explained how Neighbourhood Plans allow communities to decide what type and design of buildings they want in their locality and how they

set the planning priorities for the next 10-15 years. Community plans determine the future of a community and how it can change its current situation for the better and is not designed to deal with land matters.

The meetings discussed for example, how we might address traffic volume and speeding and parking issues without the realistic provision of a bypass around the village. The requirement to have better transport links was highlighted as was the need to preserve and promote wildlife by planting more trees, creating wild flower verges and creating bird boxes and Hedgehog routes.

Many commented that the village was a great place to live but in order to thrive it needed commitment from all the community in order to improve its facilities and to give the Parish Council a strong mandate to represent the community.

Further consultation was needed, including a need to hear the views of our village young people and this will be a priority in the forthcoming months. Thereafter a decision will be made as to the type of plan best suited to our needs and how we might establish an action plan to achieve our set goals.

You can still contribute your views and ideas by contacting any members of the Parish Council or by emailing Nick Jones at njones40@sky.com

Further details about both Neighbourhood and Community Plans can be found at - Humber and Wolds Rural Action, www.hwrcc.org.uk or by visiting East Riding of Yorkshire Council, www.eastriding.gov.uk and go to 'neighbourhood planning'.

You can also see a key points summary of the consultation questionnaire/public meetings on the parish council website www.middletononthewolds.co.uk.

MIDDLETON BOOK GROUP

"THE SNOW CHILD " by EOWYN IVEY

Set in Alaska in the 1920s, Jack and Mabel have staked everything on a fresh start in a remote homestead, but the wilderness is a stark place and Mabel is haunted by the baby she lost years ago. When a little girl appears mysteriously on their land their lives change. Is she real or not? This is a whimsical, magical book and gripped everyone in our book group.



'THE BALLROOM " by ANNA HOPE

Set in 1911 inside a mental asylum based on "Menston" (High Royds Hospital) near Leeds, which only closed in 2003. This is a love story about John and Ella, who were both put in the asylum unjustly. It is a mixture of both fiction and fact, covering eugenics (a study of methods of improving the human race). This book gave us lots to think about.

Jennifer

'THREE THINGS ABOUT ELSIE" by JOANNA CANNON

A novel exploring the inner life of life's outsiders. Florence, an elderly lady living in a residential home is beset by both nostalgia and dementia. Following a fall whilst awaiting rescue she reminisces about her best friend Elsie and is troubled by the appearance of a new resident who she believes to have died sixty years ago.

'THE STARS ARE FIRE" by ANITA SHREVE

A novel set in Maine in 1947. Grace, the wife of an abusive man and the mother of two small children survives a fire which is ravaging the coast. Her husband, who volunteers to fight the fire is missing. The story revolves around Graces' efforts to build a new life for herself and her children and the subsequent freedom she experiences. Her husband unexpectedly reappears and all that she has achieved is in jeopardy.

Lindsay

Next books for discussion:

12th March

“The Secret History” by Donna Tart

“American Wife” by Curtis Sittenfield

The Book Group Annual Dinner

Our annual dinner at the Robin Hood Inn in January is usually a pleasant but uneventful occasion where we enjoy a chat over a good meal. This year was somewhat overshadowed by the arrival outside the window of a burning van

*The order was just being taken
For starter, mains and pud
As the Book Group had gathered together
For a meal at the Robin Hood.*

*The conversation was flowing
When a shout made them all stop and stare
Outside there were flames ascending
With smoke going into the air.*

*The van was a raging inferno
The Fire Brigade were quickly there
The flames were soon extinguished
And they were able to sample the faire.*

Dave Dennis

Contacts:

Lyn Dennis 219500 lyndennis456@gmail.com

Jennifer Keenan 217909 pajkeenan@gmail.com



All you ever wanted to know about

Canals, Plants and People, a Yorkshire Perspective

A new book written by Dr Ray Goulder, giving the fruits of his canal and plant observations over the last 10 years.

The Drifffield Canal, the Leven Canal and Beverley Beck are all featured and there is a wealth of photos.

The price is £10.50 + £3.00 p&p (£13.50) per copy from Dr Margaret Atherden, PLACE Office, York St John University, Lord Mayor's Walk, York YO31 7EX. Cheques to be payable to PLACE.

LOCAL BIRDS & WILDLIFE

Well, so far we haven't had any lengthy spells of harsh weather, so my visions of the garden filling up with sanctuary-seeking Fieldfares, Redwings, Waxwings and Bramblings have not been realised. (TBH have never been visited by Waxwings and have only had one Redwing, one Brambling and a couple of Fieldfares, all several years ago now. But hope springs eternal...)

Other people have been having more interesting times though: an aviary of budgies attracted an unwelcome (but exciting) visitor – when their owner heard a commotion outside and looked out, a young male Goshawk was sitting on top of the aviary, and was very reluctant to leave such a promising convenience store! The top now has been screened to prevent further budgie-baiting. Finches seem to be doing well on The Paddocks; one garden in particular hosting 4 Greenfinches and a pair of Bullfinches which looked magnificent in the breeding plumage. Meanwhile there have been nocturnal shenanigans on South Street, with a perfect print of an owl appearing on a window not only once but again a week or two later. Was it the same owl failing to learn from it's mistakes or another flying off with a headache? (No fatalities, luckily).

Finally, several people have asked about the difference between Tree Sparrows and House Sparrows. We're very lucky having both in the village as they are on the Red List of species in decline. Male and female Tree Sparrows are identical (presumably not to them); they look like male House Sparrows but with a chestnut-coloured top of the head, a dark mark on their cheek and a white collar. They have been described to me as "House Sparrows which have dressed up to go to a party"!



Tree sparrow (male or female)



Male house sparrow



Female house sparrow

(House sparrow photos by Ian Lavender)

I look forward to hearing from you about any sightings/queries/observations – just email me at barbaralavender@btinternet.com

MIDDLETON ON THE WOLDS CE VE SCHOOL



Executive Headteacher: Mrs E Harros
Station Road, Middleton on the Wolds, Driffield YO25 9UQ
E-mail: middleton.primary@eastriding.gov.uk Tel: 01377 217323



Clothing Collection

Our next clothing collection will be on **Monday 18th March**. Any unwanted clothes, coats, shoes, hats, scarves, handbag or belts can go in the collection. The heavier the collection, the more money that is raised for school, so please save all unwanted items for us. All bags need to be at in the school car park by 9:00am on the morning of Monday 18th March. Thank you.



Middleton Minis

Our parent, carer, baby and toddler group runs from **1:30 to 3:30pm** every Tuesday afternoon (term time only) at Middleton on the Wolds primary school. Drop in for 20 minutes or the full 2 hours. We look forward to seeing you.



On-going Collections

On-going Collections – We collect used stamps and used printer cartridges. Thank you.

MIDDLETON ON THE WOLDS PRIMARY SCHOOL NURSERY

- ◇ Providing education for 2, 3 and 4 year olds Monday - Friday.
- ◇ We accept the Government's childcare vouchers for up to 30 hours of free provision for 3 year olds (conditions apply)
- ◇ Additional sessions can be purchased for £10.50 per session.
- ◇ Lunchtime sessions are £1.75 (free if children attend for the whole day) with the option to purchase a school meal for £2.20.
- ◇ Children are welcome in the term after their 3rd birthday for funded places.
- ◇ For further details please contact: Heather Measom
Email: middleton.primary@eastriding.gov.uk Tel: 01377 217323



End of Term

School closes at 3:30 pm on Friday 5th April and reopens at 08:40 am on Tuesday 23rd April.

NEWS FROM OUTSIDE MIDDLETON

LUND VILLAGE HALL

Edwina Hayes and Guests

Folk Saturday 13th April

£10, Doors Open 19.00 for 19.30

Great voice, great lyrics from an acclaimed singer with the Farmers Daughters Choir as guests – what more could you want!!



Michael Parkinson described Edwina

Hayes as "A very talented young lady," her recent performance at Mr Bens in Leeds reiterated her standing as one of the finest female singer-songwriters this country has produced for many a long year.



Les Barker Comedy

Poet Saturday April 27th

Supper, bar and a poet, comedy and songs
£15 in advance (to include a 2 course theatre supper). Doors open 18.30 - supper at 19.00

Les Barker is an English poet best known for his comedic poetry and parodies of popular songs, however he has also produced some very serious thought-provoking written work. A fun evening of comedy, poems and songs.

The Secret

*I have tried to write good poetry;
At last I feel I'm winning -
The secret is to put the end
Close to the beginning.*

Les Barker – 2003

For further details contact Malcolm McKechnie on 07842 663378

Kiplingcotes Derby 21st March

All is gearing up for the oldest horse race in England which has taken place every year since 1519. The organisers are hoping for better weather this year as they are expecting more runners and supporters for the big event.



The bookies, bar and catering are all organised and new celebratory badges are being made for this 500th anniversary. A new edition of the book has also been printed.

It starts near to the old disused former railway station, runs for 4 miles on farm tracks and road verges and ends at Londesborough. The winning prize is £50 but the second receives the entry fees which is often larger than the first prize.

Information from Guy Stephenson

7	5	6	4	3	2	1	8	9
9	2	3	8	1	6	5	7	4
6	4	8	1	7	9	5	2	3
2	3	4	6	8	9	7	1	2
5	3	4	6	8	9	7	1	2
1	7	9	2	4	3	8	6	5
8	6	2	5	7	1	9	4	3
2	4	7	3	5	8	6	9	1
3	1	5	9	6	7	4	2	8
6	9	8	1	2	4	3	5	7

Michael Caine 1933 Prince Edward 1964
Glenn Miller 1904 Liza Minnelli 1946
Andrew Lloyd Webber 1948

- Word Wheel: narcissus
10 Sir Robert Walpole [1721-1742]
9 1986
8 'What's Up Doc'
Fenchurch Street and Liverpool Street
7 Kings Cross, Marylebone Station
6 Ajax
5 Clint Eastwood
4 Sleep
3 Six
2 Five
1 Sting

Quiz Answers

LOCAL LINKS

LOCAL WEBSITES

There are a number of websites relevant to the village which readers may find worth taking a look at:

www.middletononthewolds.co.uk - the Parish Council site

www.middletononthewoldsprimary.co.uk

www.middletonbowls.co.uk

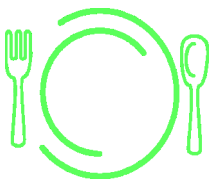
Plus facebook pages:

Middleton on the Wolds Community

Middleton on the Wolds Village Hall and Reading Rooms - the VH Committee page with photos from the Christmas Fair etc

Middleton and North Dalton cc - Cricket Club

Middleton on the Wold's area selling site



VILLAGE LUNCH THE ROBIN HOOD INN

Monday 4th March
12.15 for 12.30pm

If regulars are unable to attend please contact Lynn Wooldridge on 217457 by Friday 1st March . Anyone wishing to come for the first time is most welcome and should contact Lynn to book a meal.



THE BODY SHOP®

**FREE SKINCARE CONSULTATIONS|
PARTIES|CATALOGUE DISCOUNTS
|WORK FROM HOME OPPORTUNITIES**

**Contact Cayleigh Smith
Area Manager
On: 07702217436**

ADVERTISING COSTS

Rates	Month	Year
Whole Page	£25	£150
1/2 Page	£15	£100
1/3 Page	£10	£60

Full colour - Print run 500 copies - Please supply in pdf format

Contact: Tina 01377 217242, middletonflyer@yahoo.com



—Traditional— FISH & CHIPS

**All fish is Haddock
skinned and boned**

Fish & Chips	5.60	Sausage & Pattie	0.90
Single Fish	3.90	Chicken Nuggets & Chips	3.50
Large Fish	5.10	Fishcake	1.10
Small Chips	1.70	Beef Burger	2.00
Large Chips	2.80	Cheese Burger	2.50
Fish Goujons & Chips	4.40	Spam Fritter	1.20
Large Fish Goujons & Chips	5.60	Onion Rings	1.80
Pattie and Chips	2.60	Fish Pattie	1.70
Sausage & Chips	2.60	Breadcake	0.40
		Peas, Curry or Gravy	0.80

Specials

served with Peas, Curry or Gravy

2 x Sausage & Chips	4.00
2 x Pattie & Chips	4.00
Small Fish and Chips	4.60

Advertisement



BLACK YAK



High Quality Fair Trade Clothes, Crafts & Accessories



**25% OFF
ALL WARM
JACKETS***

*** SPECIAL OFFER FOR
FAIRTRADE FORTNIGHT
25TH FEBRUARY - 10TH MARCH 2019
WITH THIS FLYER**

T: 01377 217777
E: INFO@BLACKYAK.CO.UK
WWW.BLACKYAK.CO.UK

WE ARE BASED AT
FRONT STREET COURT
MIDDLETON ON THE WOLDS
DRIFFIELD
YO25 9TZ

REGULAR GROUP ACTIVITIES

Weekly Groups

Monday Coffee Morning 10.00am Reading Rooms

(Except when there is a Village Lunch - see below)

Monday Pilates 6.00-7.00pm Village Hall

Tuesday Table Tennis 6.00-7.30pm Village Hall

Wednesday Line Dancing 7.30-9.00pm Village Hall

Thursday Middleton Movers 2.00-3.30pm Village Hall

Thursday Pilates 7.00-8.00pm Village Hall

March

4th Village Lunch 12.15pm Robin Hood Inn

4th Parish Council 7.00pm Reading Rooms

12th Book Group 2.00pm 9 St Andrews Close

12th Village Hall Committee 7.30pm Reading Rooms

16th Charity Coffee Morning 10.00am Reading Rooms

17th Litter Picking 10.00am 24B Station Road

21st Country Women's Association 7.30pm Reading Rooms

LOCAL CONTACTS

Middleton Messenger	Mike Kelly	0771 3620912
	Lyn Dennis	219500

Village Hall/Reading Rooms	Jennifer Keenan	217909
----------------------------	-----------------	--------

Country Women's Association	Christine Johnson	217374
-----------------------------	-------------------	--------

Methodist Chapel	Miss P Hodgson	217426
------------------	----------------	--------

First Responders	Chris Brent	219469
------------------	-------------	--------

Parish Clerk	Sandra Morrison	01262 470496
--------------	-----------------	--------------

Book Group/Middleton Movers	Lyn Dennis	219500
-----------------------------	------------	--------

Village History	Geoff Wisher	217517
-----------------	--------------	--------

Recreation Club	Dave Newlove	07901 833784
-----------------	--------------	--------------

Table Tennis	Louise Newlove	217801
--------------	----------------	--------